

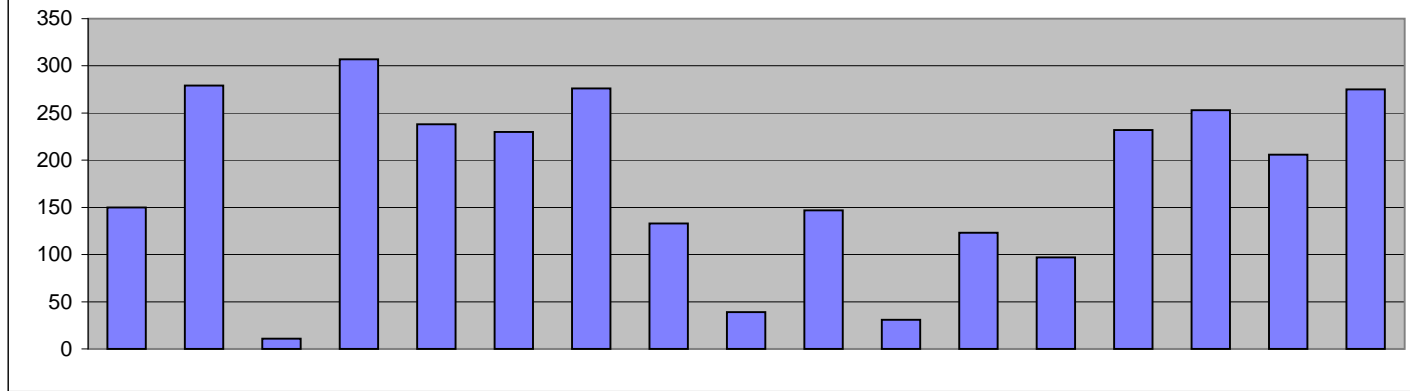
Combined total number of charts screened: 7653  
 through March 2008

Number of subjects passing registry criteria from above: 4626  
 percentage passing: 60.4

Number of subjects failing registry criteria from number screened: 3027

Reasons for failure to pass criteria:

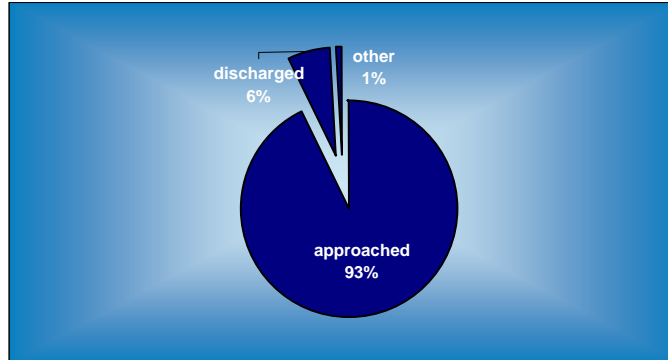
inpatients	140	268	11	307	237	224	265	133	36	142	29	113	95	225	251	204	275	2955
outpatients	10	11	0	0	1	6	11	0	3	5	2	10	2	7	2	2	0	72
																		3027



age	dual dx	deceased	dementia	ETOH &/or drug hx	encephalopathy	language	med. fragile	mental retardation	moving	multiple sclerosis	other neuro degenerative	Parkinson's	Psychiatric HX	seizures (premorbid)	sensory deficits	tumor	
150	279	11	307	238	230	276	133	39	147	31	123	97	232	253	206	275	3027

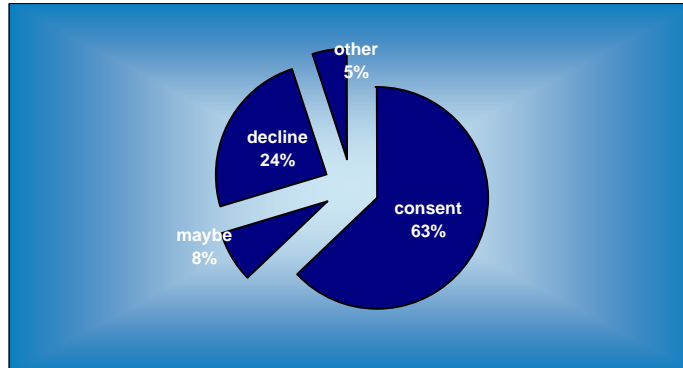
### What happened to the 4626 patients who passed criteria for admission to the patient registry?

approached	4295
discharged	289
other	42



### What was the outcome from the 4295 patients who were approached about participating?

consent	2695
maybe	329
decline	1051
other	220



### Total Enrollment to date:

<u>CVA</u>	<u>TBI</u>
1,987	708

## Usage from February 2001 through March 31, 2008

StudyName	No. Passed 1st screen	No. Reached By DB Staff	Pct. Reached By DB Staff re: a study	No. Agreed To Be Contacted	Pct. Agreed To Be Contacted
ActionJuly2006-Sarah	14	14	100.0	14	100.0
Adjuvant Psych	112	106	94.6	99	93.4
Anticipatory Grasp-AD	14	14	100.0	14	100.0
Aphasia Studies- Grant 2	73	73	100.0	69	94.5
Apraxia battery	92	88	95.7	81	92.0
Attention Lab	239	209	87.4	157	75.1
Aug Com-experiment 1	72	67	93.1	63	94.0
Aug Com-pilot 1	5	5	100.0	5	100.0
Block Naming & Repetition	21	21	100.0	21	100.0
Body Representations	13	13	100.0	13	100.0
Caregiver Survey	132	132	100.0	132	100.0
Cog and spatial action-EXP 1	137	122	89.1	108	88.5
Cog and spatial action-EXP 2	14	14	100.0	14	100.0
Cog and spatial action-EXP 3	19	18	94.7	18	100.0
Contextual Priming 1	12	12	100.0	12	100.0
Contextual Priming 2	6	6	100.0	6	100.0
Contextual Priming 3	3	3	100.0	2	66.7
Contextual Priming 4	5	2	40.0	2	100.0
Density	13	13	100.0	13	100.0
E-mail Study	53	53	100.0	47	88.7
Ethnic Bias	1	1	100.0	1	100.0
fMRI-audattn-amphetamine	25	25	100.0	22	88.0
Gesture Learning 2	1	1	100.0	1	100.0
Grasping and using objects	24	24	100.0	24	100.0
Hoon- DTI	83	83	100.0	82	98.8
Hoon- Nicotine	69	69	100.0	68	98.6
Hoon-fMRI with methyl	110	108	98.2	102	94.4
Impaired self-awareness	6	3	50.0	3	100.0
Mapping Anatomy	24	17	70.8	17	100.0
Multi-word pilot-TS	5	5	100.0	5	100.0
Multi-word study1-TS	4	4	100.0	4	100.0
Naming in context	19	19	100.0	19	100.0
Naming-modelling	60	58	96.7	58	100.0
Nat Action- June 2006 startup	5	5	100.0	5	100.0
Naturalistic Action	202	193	95.5	164	85.0
Navigation-therapy study	1	1	100.0	1	100.0
Neglect	31	31	100.0	27	87.1
Neglect-2	31	30	96.8	28	93.3
Neuro Effects of amphetamine	61	61	100.0	54	88.5
Pace-cyclic naming	22	22	100.0	22	100.0
PT mobility with Amy& Kelly	8	8	100.0	8	100.0
Red Angry Dog Pilot	2	2	100.0	2	100.0
Refractory Access	1	1	100.0	1	100.0
Research Scan- Schwartz	8	8	100.0	8	100.0
Research Scan-Buxbaum	70	70	100.0	70	100.0
Right Hemisphere Battery	82	82	100.0	67	81.7
Sentence Shifting	25	25	100.0	25	100.0
Steve Jax Adaptation	22	22	100.0	22	100.0
STM	39	39	100.0	39	100.0
STM-FKtesting10/07	5	5	100.0	5	100.0
STM-FKtesting3/06	11	11	100.0	11	100.0
Tapanta Fossett	43	39	90.7	37	94.9
Technology Survey	139	102	73.4	87	85.3
Temporal modulation	45	37	82.2	33	89.2
TMS	1	1	100.0	1	100.0
Validity of NAT	48	48	100.0	48	100.0
Virtual Reality-RPG	26	26	100.0	19	73.1
<b>Grand Total</b>	<b>2408</b>	<b>2271</b>	<b>94.3</b>	<b>2080</b>	<b>91.6</b>

No. Reached By study	Pct. Reached By study	No. Failed PreConsent	Pct. failed PreConsent	No. Passed PreConsent	Pct. Passed PreConsent
Team	Team	Status	Status	Status	PreConsent Status
14	100.0	0	0.0	14	100.0
92	92.9	73	79.3	19	20.7
3	21.4	0	0.0	3	100.0
69	100.0	4	5.8	65	94.2
63	77.8	16	25.4	47	74.6
128	81.5	118	92.2	10	7.8
59	93.7	18	30.5	41	69.5
5	100.0	0	0.0	5	100.0
21	100.0	3	14.3	18	85.7
12	92.3	4	33.3	8	66.7
106	80.3	22	20.8	84	79.2
99	91.7	34	34.3	65	65.7
12	85.7	2	16.7	10	83.3
12	66.7	2	16.7	10	83.3
12	100.0	0	0.0	12	100.0
6	100.0	0	0.0	6	100.0
2	100.0	0	0.0	2	100.0
1	50.0	0	0.0	1	100.0
13	100.0	0	0.0	13	100.0
45	95.7	26	57.8	19	42.2
1	100.0	1	100.0	0	0.0
18	81.8	10	55.6	8	44.4
1	100.0	0	0.0	0	0.0
21	87.5	1	4.8	20	95.2
21	25.6	17	81.0	4	19.0
22	32.4	18	81.8	4	18.2
77	75.5	55	71.4	22	28.6
3	100.0	3	100.0	0	0.0
16	94.1	4	25.0	12	75.0
5	100.0	0	0.0	5	100.0
3	75.0	0	0.0	3	100.0
19	100.0	0	0.0	19	100.0
58	100.0	44	75.9	14	24.1
5	100.0	1	20.0	4	80.0
122	74.4	55	45.1	67	54.9
0	0.0	0	0.0	0	0.0
26	96.3	6	23.1	20	76.9
28	100.0	20	71.4	8	28.6
50	92.6	32	64.0	18	36.0
22	100.0	0	0.0	22	100.0
8	100.0	6	75.0	2	25.0
2	100.0	0	0.0	2	100.0
1	100.0	0	0.0	1	100.0
8	100.0	0	0.0	8	100.0
67	95.7	0	0.0	67	100.0
56	83.6	20	35.7	36	64.3
10	40.0	0	0.0	10	100.0
19	86.4	1	5.3	18	94.7
37	94.9	2	5.4	35	94.6
5	100.0	0	0.0	5	100.0
11	100.0	0	0.0	11	100.0
35	94.6	23	65.7	12	34.3
77	88.5	33	42.9	44	57.1
31	93.9	16	51.6	15	48.4
1	100.0	0	0.0	1	100.0
37	77.1	19	51.4	18	48.6
18	94.7	8	44.4	10	55.6
1715	82.5	717	41.8	997	58.1

No. in deferred status	No. Signed Consent	Pct. Signed Consent	No. Failed, withdrew or dropped out Post Consent	Pct. Failed, withdrew or dropped out Post Consent	No. Completed Study
0	14	100.0	0	0.0	14
2	17	89.5	3	17.6	14
0	3	100.0	0	0.0	3
5	60	92.3	7	11.7	47
3	38	80.9	1	2.6	35
3	7	70.0	1	14.3	6
23	18	43.9	4	22.2	14
0	5	100.0	0	0.0	5
0	18	100.0	4	22.2	14
0	4	50.0	0	0.0	4
15	69	82.1	9	13.0	60
0	65	100.0	1	1.5	64
0	10	100.0	0	0.0	10
0	10	100.0	0	0.0	10
0	12	100.0	0	0.0	12
0	6	100.0	0	0.0	6
0	2	100.0	0	0.0	2
0	1	100.0	0	0.0	0
1	12	92.3	1	8.3	11
5	14	73.7	2	14.3	12
0	0	0.0	0	0.0	0
0	4	50.0	4	100.0	4
0	0	0.0	0	0.0	0
0	18	90.0	3	16.7	15
0	4	100.0	0	0.0	4
0	4	100.0	0	0.0	4
5	17	77.3	3	17.6	14
0	0	0.0	0	0.0	0
5	7	58.3	2	28.6	5
0	5	100.0	0	0.0	5
0	3	100.0	0	0.0	3
0	19	100.0	0	0.0	19
0	14	100.0	3	21.4	11
0	4	100.0	0	0.0	4
2	65	97.0	12	18.5	53
0	0	0.0	0	0.0	0
0	20	100.0	2	10.0	18
0	8	100.0	0	0.0	8
7	11	61.1	5	45.5	5
0	22	100.0	0	0.0	22
0	2	100.0	0	0.0	2
0	2	100.0	0	0.0	2
0	1	100.0	0	0.0	0
0	8	100.0	0	0.0	8
0	65	97.0	0	0.0	65
11	23	63.9	4	17.4	18
1	9	90.0	1	11.1	8
0	16	88.9	0	0.0	16
1	34	97.1	1	2.9	33
0	5	100.0	0	0.0	5
1	10	90.9	0	0.0	10
0	12	100.0	3	25.0	9
19	25	56.8	1	4.0	24
0	15	100.0	2	13.3	13
0	0	0.0	0	0.0	0
0	18	100.0	2	11.1	16
2	8	80.0	1	12.5	7
<b>111</b>	<b>863</b>	<b>86.6</b>	<b>82</b>	<b>9.5</b>	<b>773</b>

Pct. Of those signing consent who completed Study	Pct. Of those reached by study teams who completed Study
100.0	100.0
82.4	15.2
100.0	100.0
78.3	68.1
92.1	55.6
85.7	4.7
77.8	23.7
100.0	100.0
77.8	66.7
100.0	33.3
87.0	56.6
98.5	64.6
100.0	83.3
100.0	83.3
100.0	100.0
100.0	100.0
100.0	100.0
0.0	0.0
91.7	84.6
85.7	26.7
0.0	0.0
100.0	22.2
0.0	0.0
83.3	71.4
100.0	19.0
100.0	18.2
82.4	18.2
0.0	0.0
71.4	31.3
100.0	100.0
100.0	100.0
100.0	100.0
78.6	19.0
100.0	80.0
81.5	43.4
0.0	0.0
90.0	69.2
100.0	28.6
45.5	10.0
100.0	100.0
100.0	25.0
100.0	100.0
0.0	0.0
100.0	100.0
100.0	97.0
78.3	32.1
88.9	80.0
100.0	84.2
97.1	89.2
100.0	100.0
100.0	90.9
75.0	25.7
96.0	31.2
86.7	41.9
0.0	0.0
88.9	43.2
87.5	38.9
<b>89.6</b>	<b>45.1</b>